

दिल्ली विकास अधिकरण
योजना सफल
समुदाय पर क्षेत्र

AREA STATEMENT

SCHEME AREA = 19000.00 SQM. (APPROX.)
AREA FOR DELHI FIRE SERVICE = 4500.00 SQM. (APPROX.)
AREA FOR COMMUNITY HALL = 3000.00 SQM. (APPROX.)
AREA FOR FUTURE USE = 31000.00 SQM. (APPROX.)
AREA FOR RELIGIOUS SITE = 400.00 SQM. (APPROX.)

LEGEND

- AREA UNDER ENCROACHMENT
- EXISTING TREES
- SCHEME BOUNDARY

NOTES-

1. LAYOUT PLAN IS PREPARED BASED ON SURVEY Dwg. No. 87/100 SUPPLIED BY SURVEY DEPT.
2. OWNERSHIP/STATUS OF LAND WILL BE ASCERTAINED BY LAND DEPT./L.D. DEPARTMENT BEFORE ALLOTMENT TO POSSESSORS OF THE LAND.
3. NO TREES CUTTING SHALL BE ALLOWED WITHOUT PERMISSION FROM COMPETENT AUTHORITY, FOREST DEPT. G.M.C.T.D.
4. THERE ARE ENCROACHMENT AT SITE ON PROPOSED PLOT FOR DELHI FIRE SERVICE 850.00 SQM ROAD R/W. NECESSARY ACTION FOR REMOVAL OF THIS ENCROACHMENT SHALL BE TAKEN UP BY LAND DEPT. D.A.
5. THE SURROUNDING ROAD WIDTH STATED IN MODIFIED PLAN AS PER SCALE FROM EARLIER APPROVED Dwg. SINCE NO ROAD WIDTH ARE MENTIONED FOR THIS AREA IN THE SCHEME DRAWING.

THE SCHEME WAS DISCUSSED IN 22ND SCREENING COMMITTEE HELD ON 18.08.07 WITH MEMO NO. 12008 IN FILE NO. F-30(4)/81/MP/PT II

OBSERVATIONS	ACTION
1. THE CORNER OF THE PLOT NO. 10000 BEING 03.00 M. BROADENED.	INCORPORATED
2. THE D.P.S. SITE BE THREE DRAWING FOR 400 SQM.	INCORPORATED
3. THE STITCHING KENDRA TO BE PART OF COMMUNITY HALL AND THE PLOT BE HANDLED OVER TO BE INCORPORATED IN THE ALLOTMENT LETTER BY BRANCH.	INCORPORATED, THE CONDITION IS OBSERVED SO THAT THE ROAD CAN BE WIDENED.
4. THE LAND EARMARKED FOR FUTURE USE TO BE DESIGNATED A SPECIFIC USE AFTER ASCERTAINING THE DEMAND ULTRA AREA.	IT WILL BE DECIDED SUBSEQUENT TO THE DEMAND RAISED BY U.I. BRANCH

DR. DIS (P/27) D.Y. DIR. (P/27) ASST. DIR. (P/27) DIS (P/27) F-30(4)/81/MP/PT II

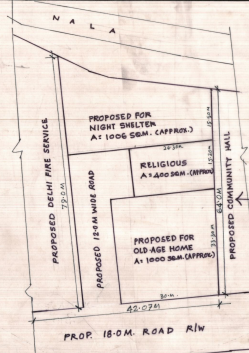
PART PROPOSED MODIFICATION IN LAYOUT PLAN (DRAFT) OF FACILITY CUM COMMERCIAL CENTRE AND HOUSING COMPLEX AT GEETA COLONY

DWG. NO. 11/200 BONE II SUB-ZONE B/ IV A UNIT 2008 (LOP) DRAWING (018)

SCALE: 1:500

P.L.G. D/MAN P.L.G. ASST. ASST. DIRECTOR (P/8)

JOINT DIRECTOR (P/8) DIRECTOR (P/8)



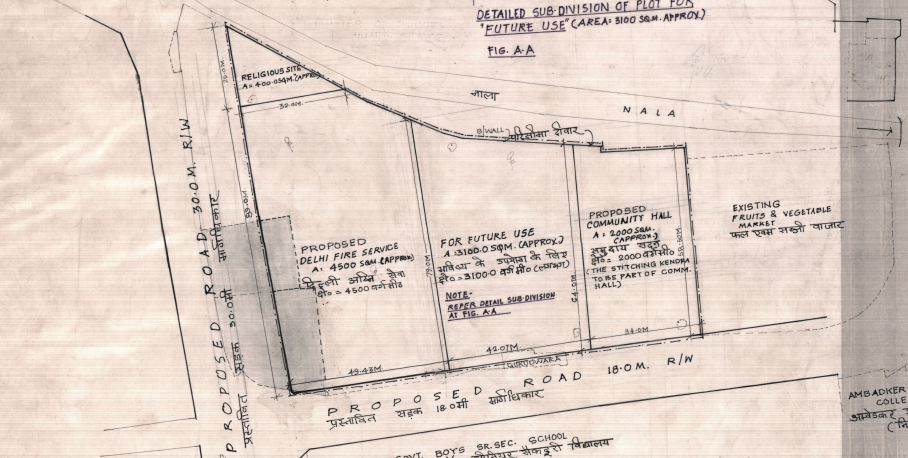
SUB-DIVISION OF PLOT MEASURING 3100.00 SQM APPROX. EARMARKED FOR FUTURE USE HAS BEEN APPROVED IN 306TH SCREENING COMMITTEE MEETING HELD ON 23.07.07 WITH VIDE ITEM NO. 43.202 IN FILE NO. F-30(4)/81/MP/PT II AT PAGE 54 IN WITH THE OBSERVATION THAT-

- THE PLOT EARMARKED FOR FUTURE USE SHOULD SPECIFICALLY BE EARMARKED AS 'RELIGIOUS'.

P.L.G. ASST. ASST. DIRECTOR (P/8) ZONE-E DIRECTOR (P/8) EBO

DETAILED SUB-DIVISION OF PLOT FOR 'FUTURE USE' (AREA: 3100 SQM. APPROX.)

FIG. A.A



AMBADKAR ENGINEERING COLLEGE (U.C) आम्बडकर अभियांत्रिकी महाविद्यालय (विश्वविद्यालयीन)

GOVT. BOYS SR. SEC. SCHOOL राजकीय लड़कों के उच्च माध्यमिक विद्यालय

POCKET-3

TO MUNICIPAL ENGINEER

111